

**Ed-Fi Alliance
Governance Advisory
Team (GAT)
June 20, 2018
Launch Meeting**



Agenda

1. Welcome and introductions - Chris
2. GAT Kick off activities
 - Review of Ed-Fi Governance - Nancy & Rick
 - Governance Advisory Team
 - Review of GAT charter, member roles, resources – Chris
 - Review of the proposed initial focus areas for the GAT – Chris
 - Questions regarding other areas of the charter – Rick
3. GAT Business
 - Summary of Finance and Assessment Work Groups - Dean & Maureen
 - Decomposition of Ed-Fi Certification - Tim & Eric
 - Discussion: Next set of work groups to launch – Chris
 - Discussion Topic: Dashboard Destiny - Chris
4. Next steps and key dates - Nancy

GAT Membership

Representation	Member
Ed-Fi Alliance & MSDF	<ul style="list-style-type: none">• Chris Moffatt (GAT Chair)• Troy Wheeler (Ex Officio)• Maureen Wentworth (Ed-Fi Product Management)• Jami O'Toole (Michael and Susan Dell Foundation)
Work Groups & Technical Advisory Group	<ul style="list-style-type: none">• Dean Folkers, Nebraska Department of Education (AWG)• Tim Casey, Skyward (TAG)
At Large	<ul style="list-style-type: none">• Stephen Fedore (Hoch), Tulsa Public Schools• Mark Racine, Boston Public Schools• Satish Passisapu, Arizona Department of Education
Facilitators & Support	<ul style="list-style-type: none">• Nancy Wilson, Collaboration Synergy• Rick Rozzelle, CELT



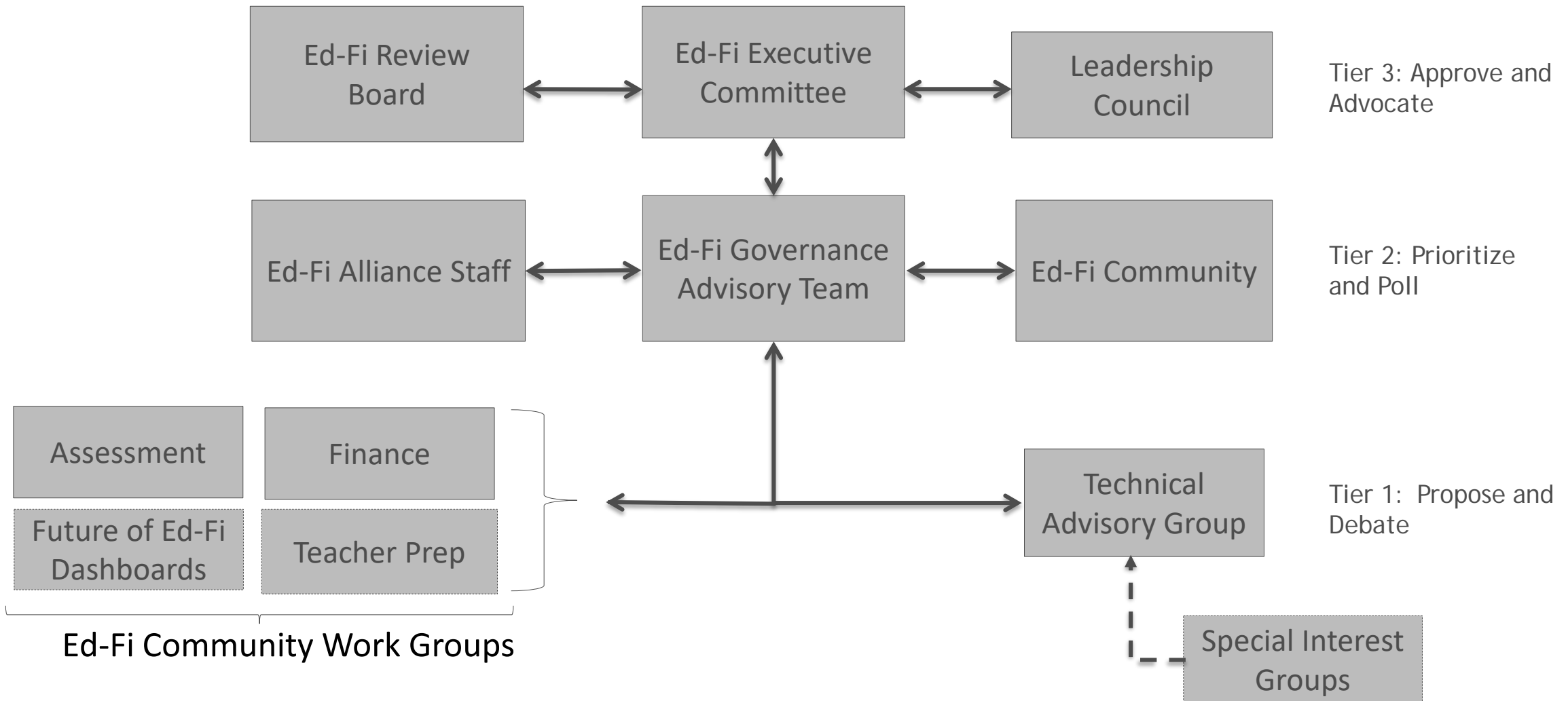
- Your name, organization & role
- Something interesting you are working on in 2018



Ed-Fi Governance Process

Brief review of the emerging Ed-Fi governance process

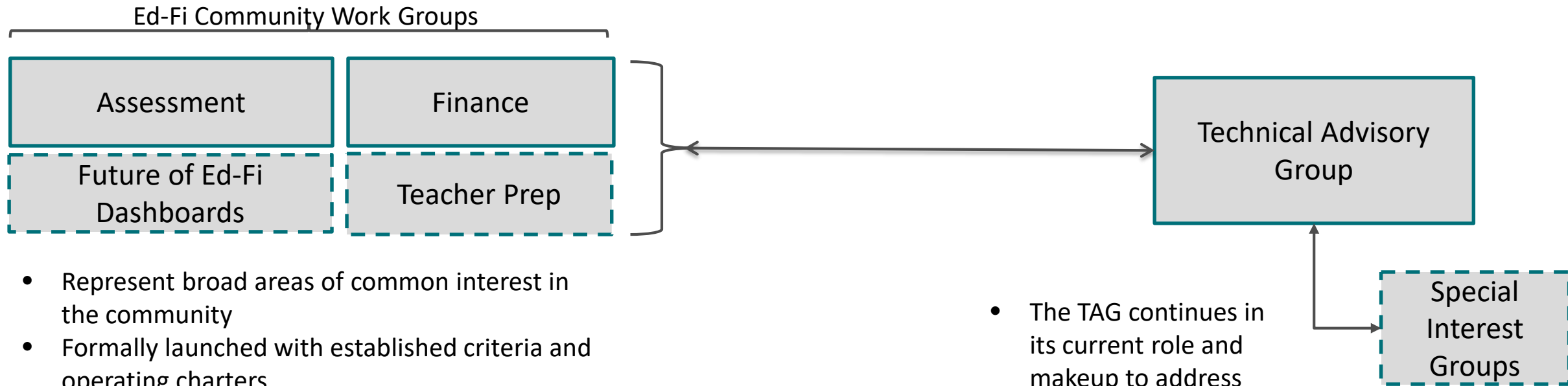
Proposed Ed-Fi Governance Structure



What's New in the Model?

- Community Work Groups – to bring in non-IT participation and to formalize the opportunities around sponsored standards
- Governance Advisory Team (GAT) – to bring together technical, vendor and business (program area) perspectives
- Leadership Council – comprised of superintendents/chief state school officers and education thought leaders
- A more formal structure for surfacing and tracking ideas, requests and opportunities
- A polling process to enable key stakeholders to provide input on proposed changes or opportunities

Governance Structure – Voice of the Stakeholder - Tier 1



- Represent broad areas of common interest in the community
- Formally launched with established criteria and operating charters
- Help to evolve the sponsored Ed-Fi data standards and technology
- Provide “use-case” perspectives and identify opportunities and challenges
- Have group leads who are endorsed by Ed-Fi
- Include LEA/SEA program and data reps, vendor reps, Ed-Fi rep and other standards bodies as appropriate

- The TAG continues in its current role and makeup to address data and technology issues across the range of Ed-Fi products
- SIG’s will remain as a transitional mechanism

Community Work Groups

- Criteria for establishing
 - A demonstrated need for the creation of a Work Group
 - E.g. A government mandate or a stakeholder imperative and such need is of a scope that precludes it being addressed as a project by an existing Work Group
 - A minimum of five Ed-Fi Community members (from separate organizations) agree to active participation in the proposed Work Group
 - Within or aligned to Ed-Fi's mission & vision
 - Approved by Ed-Fi President
- After approval to establish → Work Group Charter is drafted → reviewed and approved by GAT
 - Work Group Charter format and process to be refined by first two pilot work groups



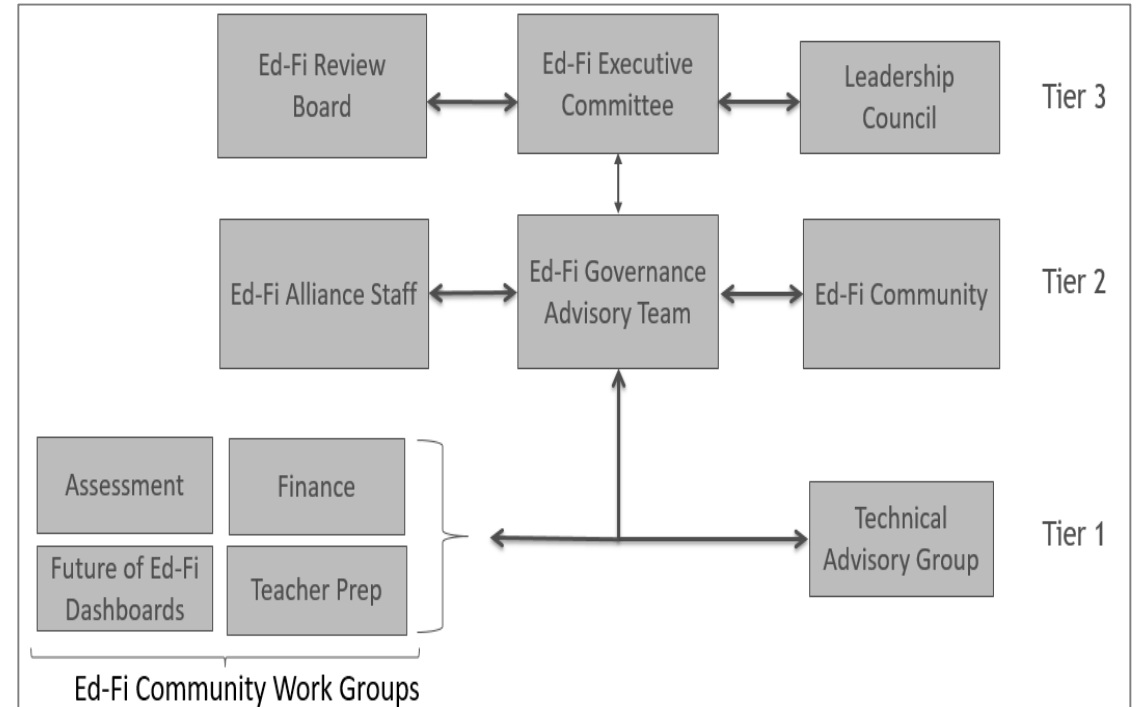
General Operating Guidelines

How the 3 tiers work together

Governance – Two-way Approval Process

From customers and stakeholders up the chain of approvals:

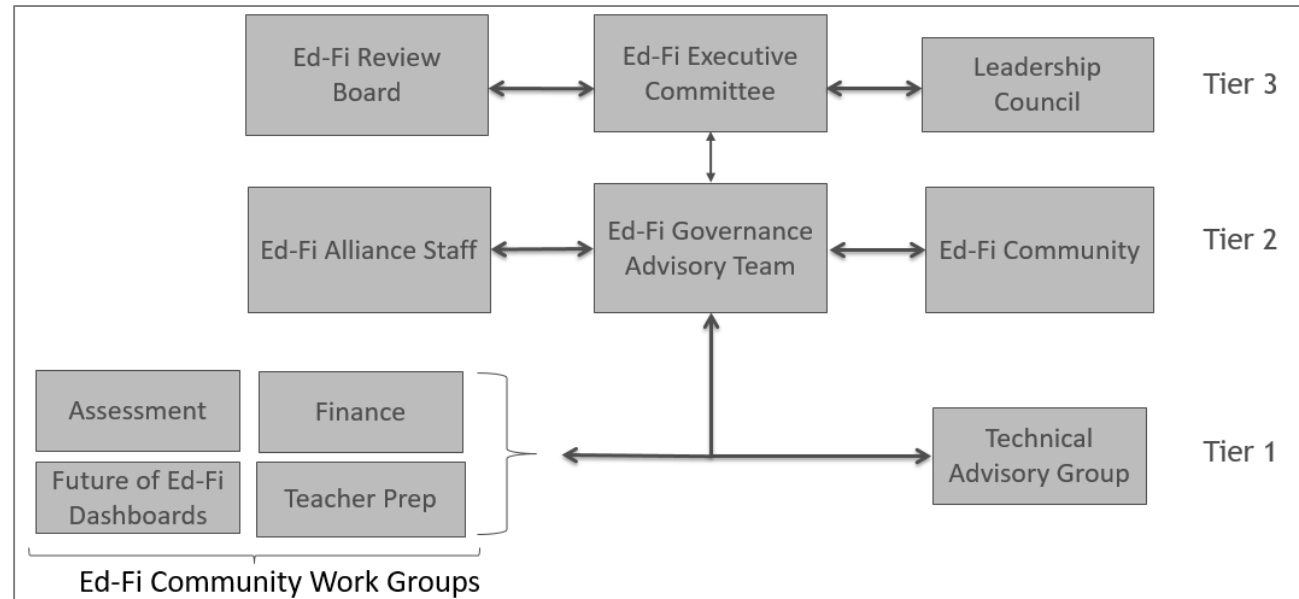
- **Tier 1** – Work Groups can identify potential projects and data standard changes for consideration by the other governance entities. These potential projects are described in a proposal. Proposals include fiscal considerations and funding sources. These are forwarded to the Governance Advisory Team (GAT).
- **Tier 1 and 2** – The GAT coordinates a review of proposals by the other governance entities in tiers 1 and 2. The GAT may also poll the broader Ed-Fi Community regarding a proposals. The GAT recommends proposal disposition to the Executive Committee.
- **Tier 3** – The Executive Committee acts on the GAT recommendations to either approve the proposal or return it to the originator for adjustments.



Governance – Two-way Approval Process

Down the chain of approval to customers and stakeholders:

- **Tier 3** - Ed-Fi Executive Committee and/or MSDF program managers can request input/feedback on an issue or concept. The request goes to the GAT in the form of a proposal.
- **Tier 2** - The GAT reviews these requests and coordinates a review of proposals by the other governance entities in tiers 1 and 2. Work Groups / TAG opine on the request and return the response to the GAT to be summarized. The GAT may also poll the broader Ed-Fi Community regarding a proposal. The GAT recommends proposal disposition to the Executive Committee (tier 3).





GAT Kick Off Activities

- Expectations and responsibilities of members
- Initial focus areas
- GAT resources

GAT Process and Contributions

The GAT is primarily responsible for facilitating the Ed-Fi Governance activities and ensuring the community's input and priorities are considered. This includes:

- Priority Verification and Alignment
- Cross Level Communication
- Polling
- Vetting
- Risk Mitigation

Role of the GAT Members

Members are responsible for:

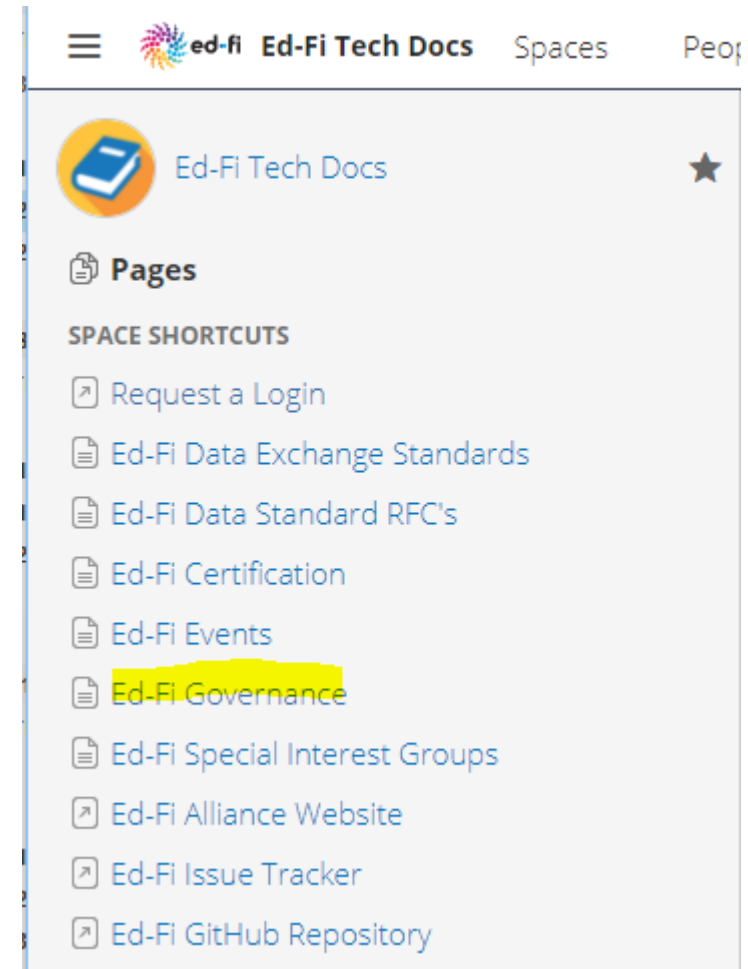
- Active participation in executing the GAT processes (previous slide)
- Providing thoughtful input on
 - Proposals that are presented for review
 - Ed-Fi standards and technology components
 - The governance processes, tools and structures
- Supporting the overall Ed-Fi Governance process with advice and assistance
- Helping to ensure good and open communication across the governance groups

Initial GAT Focus Areas (Proposed)

1. Initializing/coordinating the governance processes and start-up activities.
2. Identifying, authorizing, and starting the Governance work groups & supporting technical advisory group.
3. Communicating and implementing a set of governance decision, evaluation and communication strategies for the projects and processes.
4. Leading a few selected proposals through the entire process as a means of approach articulation, procedural refinement, organizational appropriateness and continuous improvement.

GAT Resources

- Meeting notes and other resources will be held in TechDocs.
 - The Governance space has a link in the home page navigation, or you can navigate directly to <https://techdocs.ed-fi.org/display/GOV/>
 - Requires you to be logged in. If you need an Ed-Fi SSO account, you can get one here: <https://www.ed-fi.org/access-form/>





Questions regarding other areas of the charter

Questions or clarifications regarding the GAT charter or its role in the emerging Ed-Fi governance model



GAT Business

- Summary of Finance and Assessment Working Group - Dean & Maureen
- Decomposition of Ed-Fi Certification - Tim & Eric
- Discussion: Next set of work groups to launch – Chris

Summary of Assessment Work Group

- 63 members as of 6/17/18
- Ted Dwyer and Dean Folkers are co-chairs
- Three sub-groups:
 - *Use Cases* Development and Prioritization of use cases
 - *API Adoption and Awareness* Coordination of community demand for standardized assessment data exchange and vendor certification
 - *Technical* Operational concerns
- Leads have been identified for each sub-group
- AWG TechDocs space:
- <https://techdocs.ed-fi.org/display/GOV/Assessment+Work+Group>

Summary of Finance Work Group

- 38 members as of 6/17/18
- Jill Aurand and TBD are co-chairs
- Use case: Financial Transparency Requirements for ESSA
- Mapping work in progress
 - CEDS Financial Domain
 - State Financial Reporting document produced by CCSSO/Edunomics FiTWiG
- FWG TechDocs space:
 - <https://techdocs.ed-fi.org/display/GOV/Finance+Work+Group>

Proposal: Decomposition of Ed-Fi Certification

- Overview: Tim Casey & Eric Jansson
- GAT Discussion
- Next Steps

[Document: Decomposition of Ed-Fi SIS Certification](#)

Future Work Groups: Criteria for Formation

- There is a demonstrated need for the creation of a Work Group such as a government mandate or a stakeholder imperative and such need is of a scope that precludes it being addressed as a project by an existing Work Group.
- The expressed need is within the scope of Ed-Fi data standard and technology interest and creation of the proposed Work Group shall facilitate the Ed-Fi Alliance in accomplishing its mission and vision.
- There is a minimum of five Ed-Fi Community members (from separate organizations) who have agreed to active participation in the proposed Work Group and they possess the necessary expertise and commitment to accomplish its goals.

Future Work Groups: Candidates & Timing

- Candidates
 - Teacher Prep
 - Dashboard Destiny or Visualization & Analytics
 - Data Standard Governance
 - Currently operating as a SIG: (activities currently a SIG)
 - Others?
- Timing
 - Are any of these going to be ready for activation in 2018?



Discussion Topic: Dashboard Destiny

Dashboard Destiny - Background

- In 2017 the Alliance commissioned research into the state of Ed-Fi Dashboards;
- Findings were presented at the 2017 Summit ([presentation](#))
- Recommendations
 - Option 1 – Continue Existing Ed-Fi Product Management Strategy
 - Option 2 - Transition Product to Ed-Fi Community
 - Consideration: Upgrade Product and then Transition to Ed-Fi Community
 - Option 3 – Sunset Product
 - Consideration – Partner with commercial vendor to fill the gap
 - Option 4 – Metrics only generation
- We communicated that the forthcoming Governance process was the venue to make a decision

Dashboard Destiny – Next Steps within Governance

From internal discussion, we think there are two possible approaches:

1. Start up a Community Work Group that is specifically focused on the future of Ed-Fi Dashboards, and ask the work group to consider and make a concrete proposal to the GAT and Leadership Council
2. Fold consideration of the future of Ed-Fi Dashboards into a broader work group, centered around analytics and visualization

Dashboard Destiny – Next Steps within Governance

1. Dashboard Destiny Work Group

- The work group would start where the 2017 study left off, but may consider additional approaches
- Any proposal(s) that recommended that the Alliance continue to invest in Dashboards would have to be accompanied with a “fiscal note”

2. Analytics & Visualization Work Group

- This approach would enable the pros/cons of Ed-Fi Dashboards to be evaluated alongside new and emerging options for analytics and visualization, i.e.
 - Self-service BI (e.g. PowerBI, Tableau, Cognos)
 - BI Product offerings (e.g. SchoolZilla’s Dashboard, Spotlight, and others)



Next Steps

Action items and future key dates

Next Steps

- GAT Charter
 - Members send email to Nancy Wilson (nwilson@collaborationsynergy.com) to provide additional comments on the charter
 - Revise charter per member feedback
- Prioritize initial focus areas
 - Identify priorities by survey or email?
 - Schedule next GAT meeting around the top focus areas
- Next Meetings
 - Add the October 9-12 Ed-Fi Summit in Austin to your calendars
 - GAT Charter indicates the group will meet monthly
 - Nancy will send out a Doodle poll to identify a suitable standing time
- Questions, suggestions or concerns – please send to chris.moffatt@ed-fi.org and/or nwilson@collaborationsynergy.com

Goals of the GAT

- Advise work groups, including the Technical Advisory Group (TAG), on strategic Ed-Fi priorities and planned roadmap projects as they conduct their work and plan proposals.
- Facilitate communication around proposals and polling to ensure community input is gathered and considered in the governance processes.
- Provide another conduit to the Michael & Susan Dell Foundation and Ed-Fi Alliance senior management for questions, direction, advice and approvals on potential proposals.
- Enable inter-group sharing, workflow management, and access to tools, templates, artifacts and documents related to Ed-Fi governance processes.
- Support the overall Ed-Fi Governance model in a way that provides advice and assistance while not dictating work group approach as proposals are formulated.